

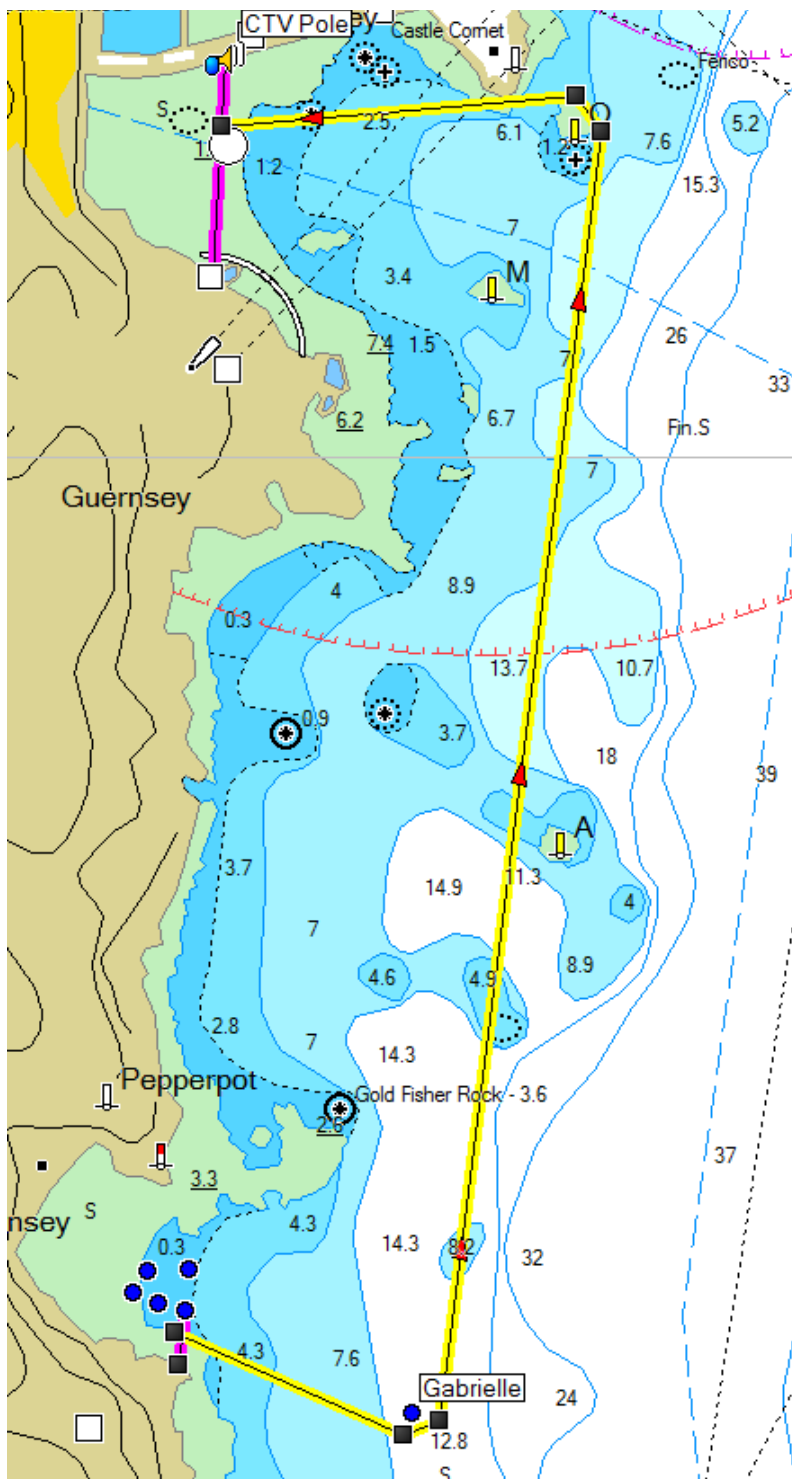


# Guernsey Rowing Club LBG

Alternative Courses

## Course A / "St Sampson's to St Peter Port Alternative" ~ 3,200 metres

The start is a line running south of the outermost visitor mooring buoy in Fermain Bay. Rowers head east to Gabrielle YCB, turn anti-clockwise then continue north to Oyster(O) beacon. Turn anti-clockwise around Oyster and then on to the finish, which is a line between the CTV Pole and Gents bathing pool steps in Havelet Bay.



© Guernsey Rowing Club LBG 2014  
Registered Number 43627

The Boathouse  
Mont Crevelt  
Bulwer Avenue  
St. Sampson's  
Guernsey, GY2 4LH

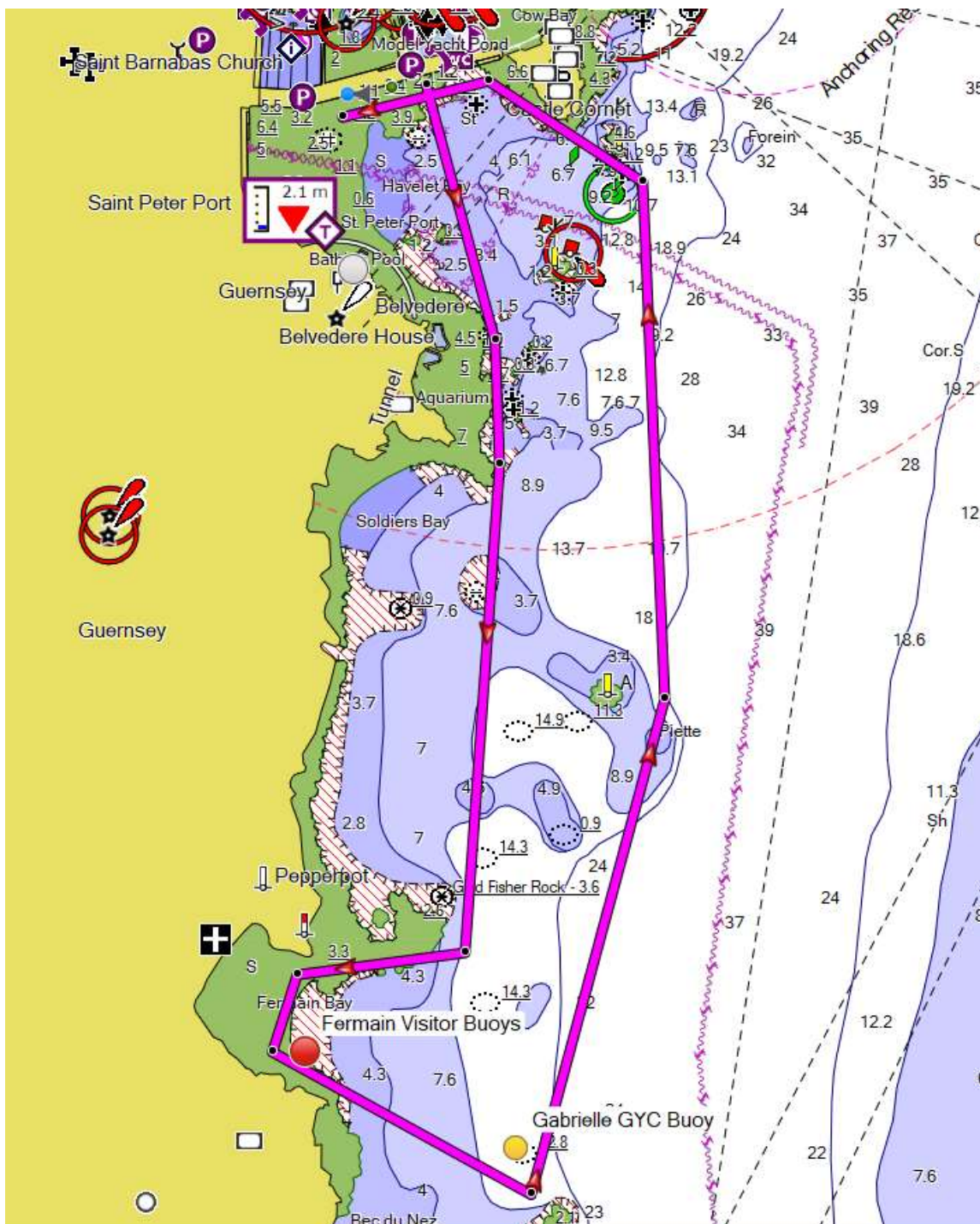


# Guernsey Rowing Club LBG

Alternative Courses

## Course B / "Around Hermain" ~ 5,500 metres

Rowers must start with sterns to the wall. The course is anti-clockwise. Rowers may row their own course towards Fermain Bay. **Beware of the Gold Fisher reef outside Fermain Bay.** Row west around all visitor mooring buoys in Fermain Bay. Continue south of the Gabrielle turn buoy, east of Anfré (A), east of Moulinet (M), east of all red and green fairway buoys, outside the large mooring buoys by the slipway then on to the finish line between the CTV Pole and Gents bathing pool in Havelet Bay.



© Guernsey Rowing Club LBG 2014  
Registered Number 43627

The Boathouse  
Mont Crevelt  
Bulwer Avenue  
St. Sampson's  
Guernsey, GY2 4LH

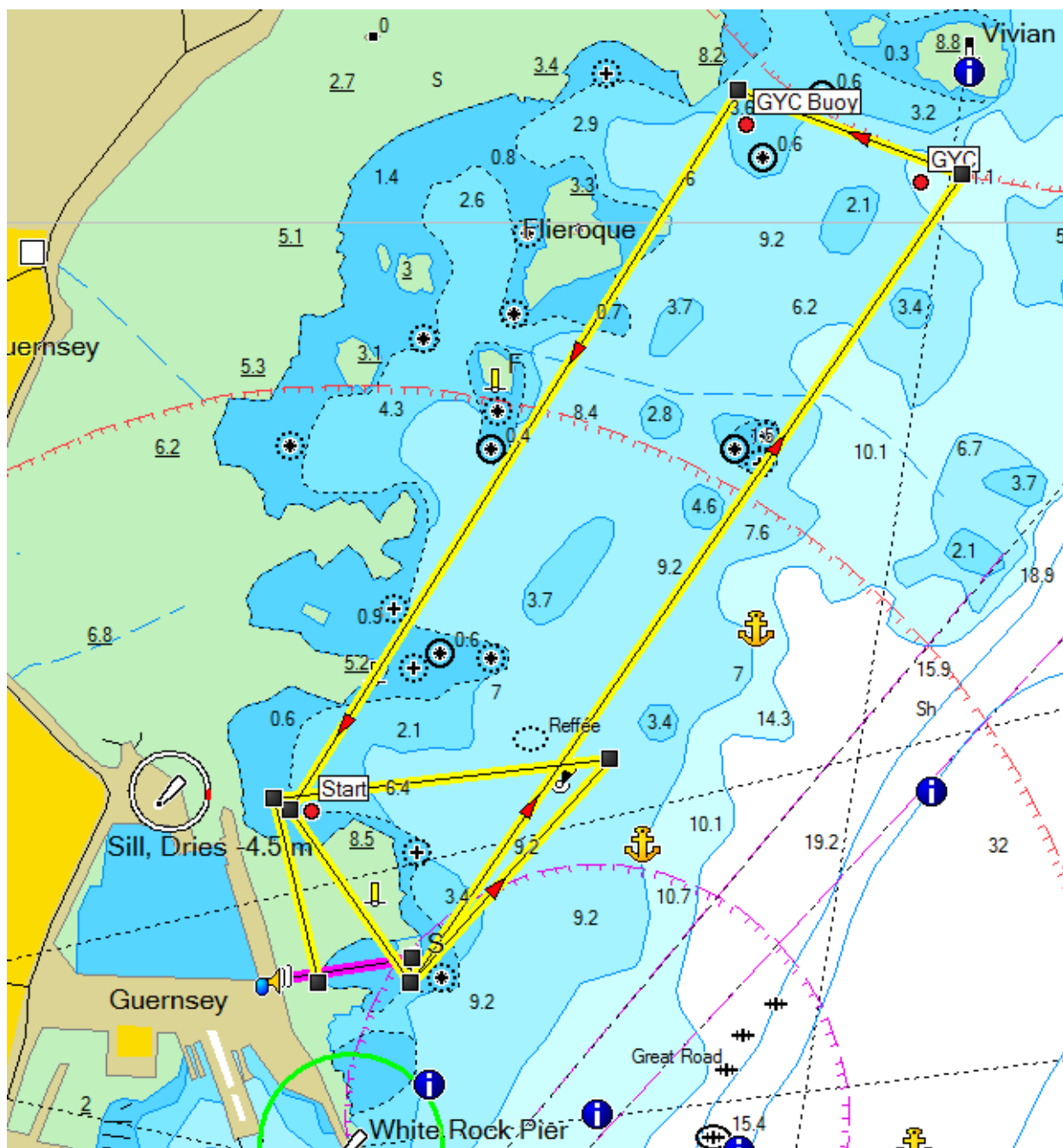


# Guernsey Rowing Club LBG

Alternative Courses

## Course C / "Belle Grève Bay" ~ 6,000 metres

The start is between the northern most tip of the East Arm and the port fairway buoy. The course is anti-clockwise with one big lap then one small lap. Rowers head south to Sardrette (S) then row north across Belle Grève Bay to the GYC turn buoy south of Vivian Beacon. Then head west to the GRC marker buoy then south back towards the start buoy. Rowers must then complete a smaller lap continuing south to Sardrette (S), east of Reffée, west of the start buoy then on to the finish line, which is between Sardrette (S) and the timekeepers on the wall.



© Guernsey Rowing Club LBG 2014  
Registered Number 43627

The Boathouse  
Mont Crevelt  
Bulwer Avenue  
St. Sampson's  
Guernsey, GY2 4LH

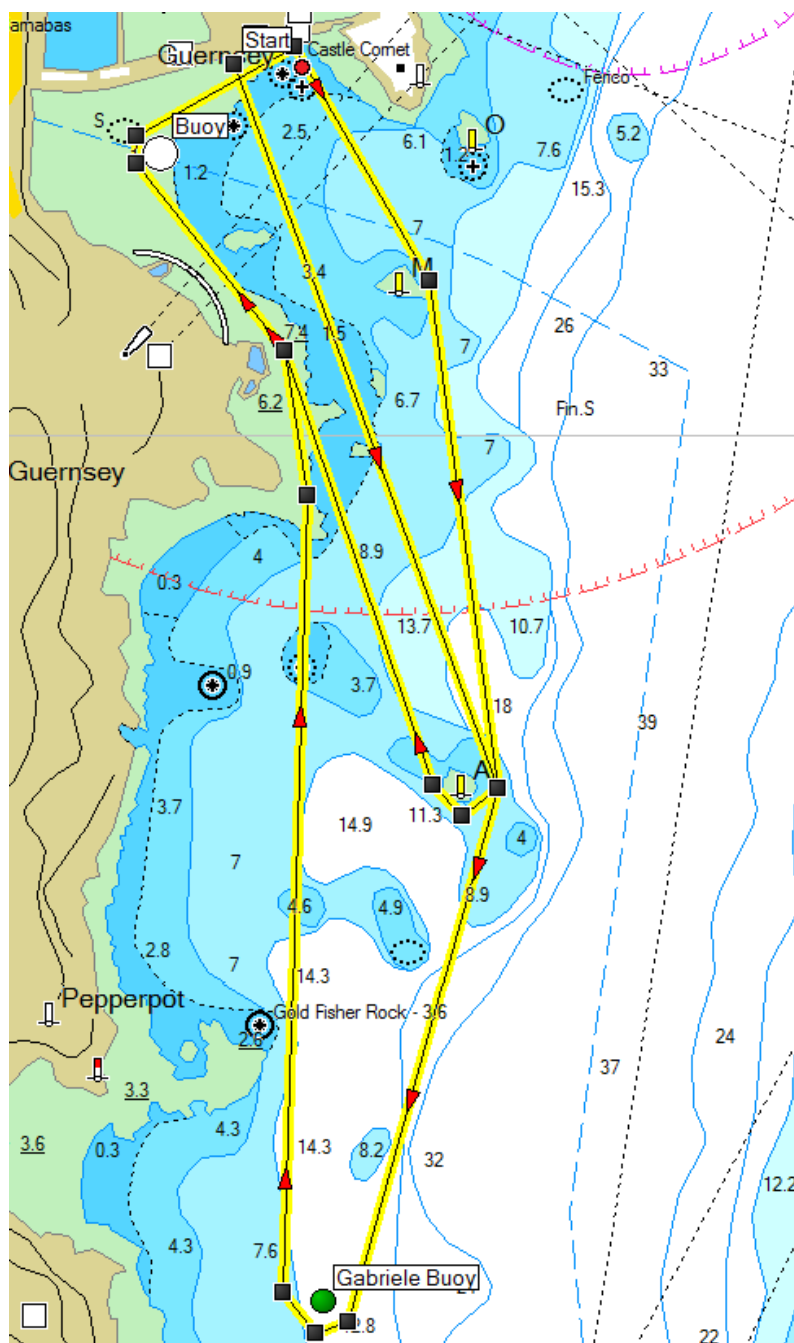


# Guernsey Rowing Club LBG

Alternative Courses

## Course D / "Andrew Mahy Memorial ~ Alternative" ~ 8,400 metres

A two lap clockwise course. Start with sterns to the wall and row directly to Anfré Beacon (A). Continue clockwise around the turn buoy in Havelet Bay and around the finish buoy. On the second lap you must pass outside Moulinet Beacon (M), outside Anfré Beacon (A) then around Gabrielle turn buoy. Continue clockwise around the turn buoy in Havelet Bay then on to the finish line between the life buoy holder above the slipway and the finish buoy.



© Guernsey Rowing Club LBG 2014  
Registered Number 43627

The Boathouse  
Mont Crevelt  
Bulwer Avenue  
St. Sampson's  
Guernsey, GY2 4LH



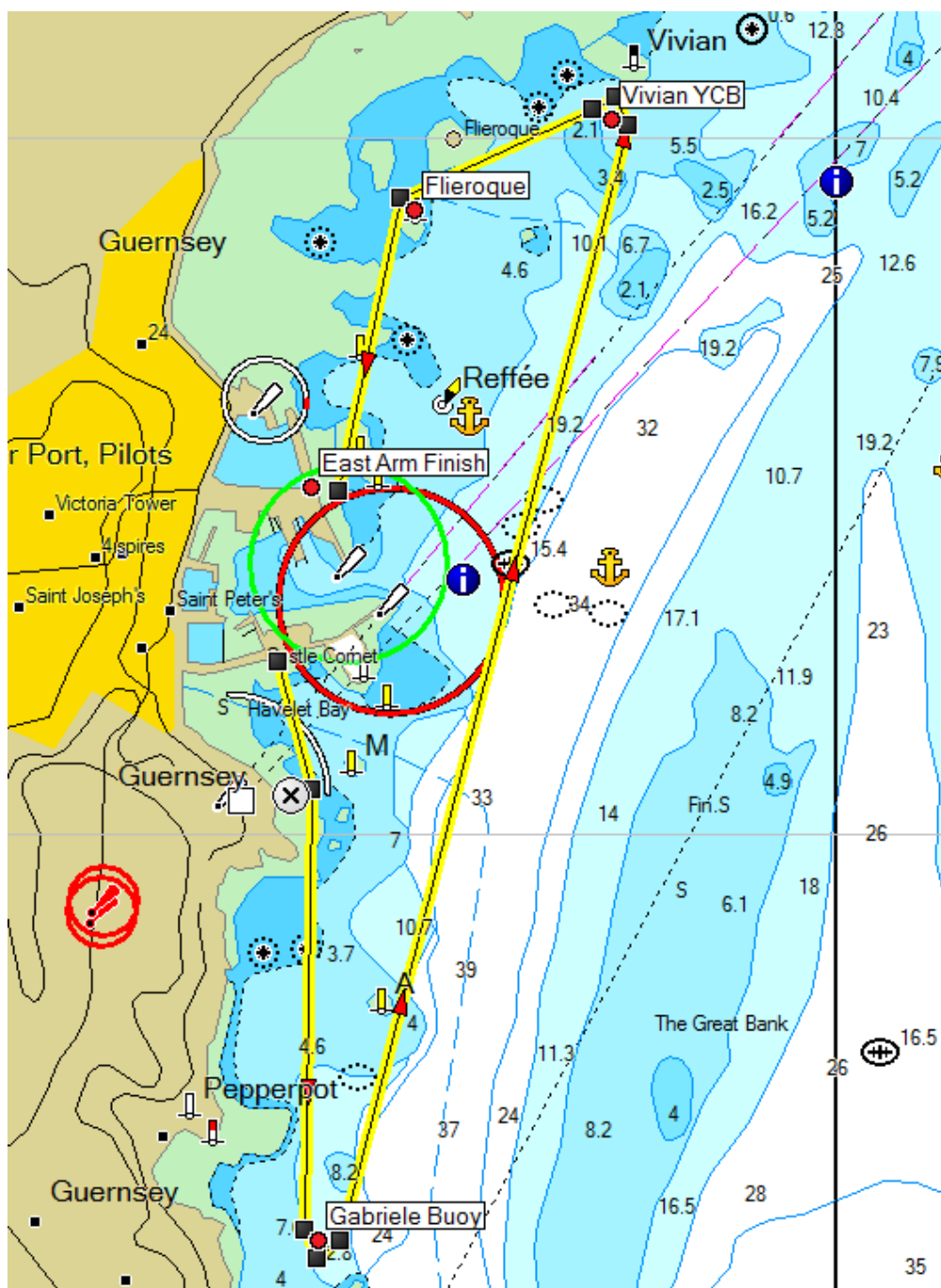


# Guernsey Rowing Club LBG

Alternative Courses

## Course E ~ 9,300 metres

An anti-clockwise course. Start with sterns to the wall and row directly to Gabrielle turn buoy. Turn Gabrielle buoy then continue northwards to Vivian Yacht Club buoy. Turn Vivian YCB then continue to Demie Flieroque (F) beacon. Pass west of Demie Flieroque (F) then on to the finish, which is a line running due west from Sardrette (S) beacon and the time keepers on the east arm wall (same finish as St Sampson's to town). All boats must pass west of Sardrette to finish.



© Guernsey Rowing Club LBG 2014  
Registered Number 43627

The Boathouse  
Mont Crevelt  
Bulwer Avenue  
St. Sampson's  
Guernsey, GY2 4LH

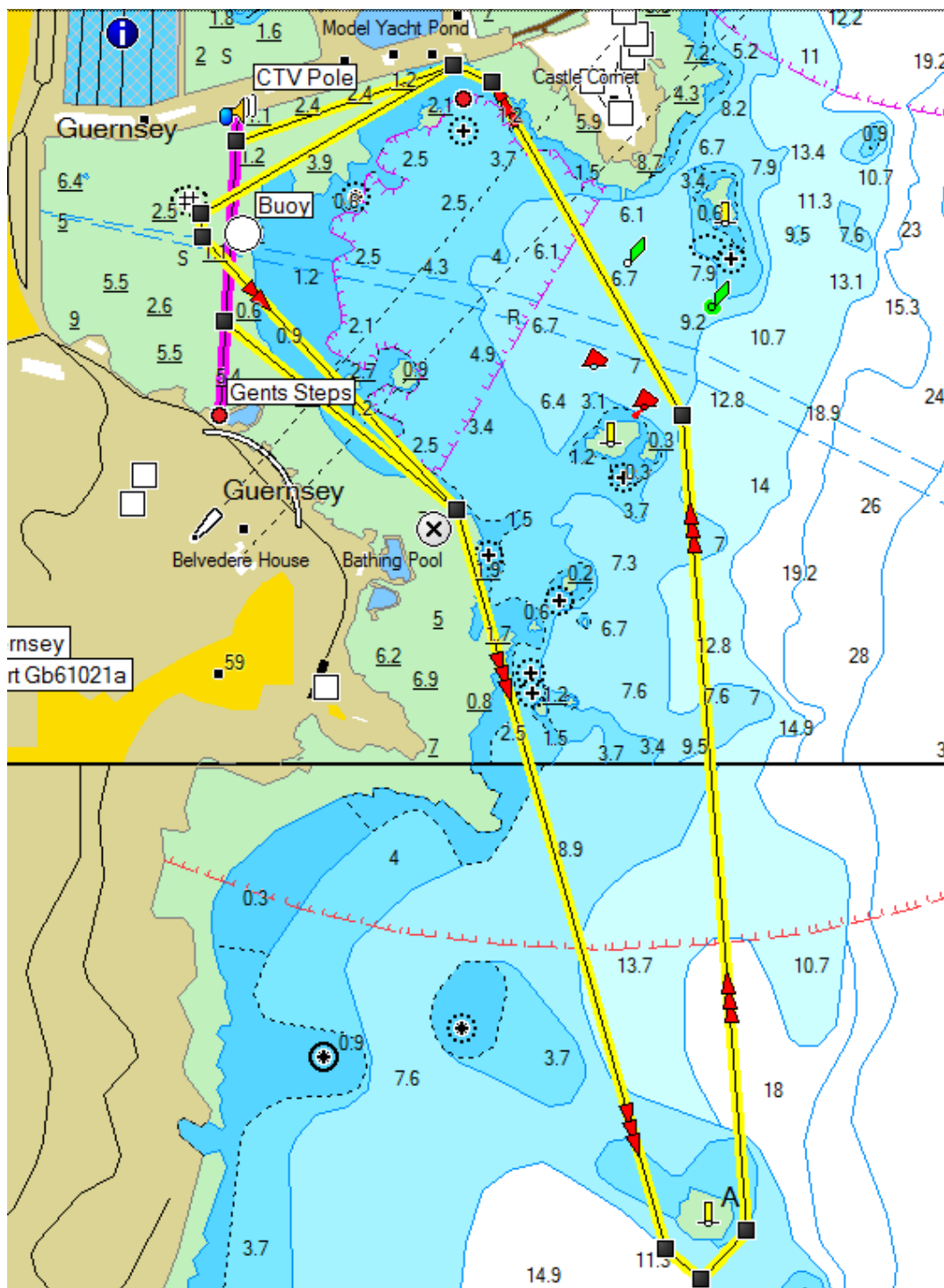


# Guernsey Rowing Club LBG

Alternative Courses

## Course F / Reverse Havelet Buoy ~9,800 metres

The start and finish line is between the CTV pole on the Havelet Bay seawall and the Gents bathing pools. The course is 3 laps in an anti-clockwise direction. All three laps must pass outside of Anfré Beacon (A), Moulinet Beacon (M) and all turn buoys in Havelet Bay.



© Guernsey Rowing Club LBG 2014  
Registered Number 43627

The Boathouse  
Mont Crevelt  
Bulwer Avenue  
St. Sampson's  
Guernsey, GY2 4LH

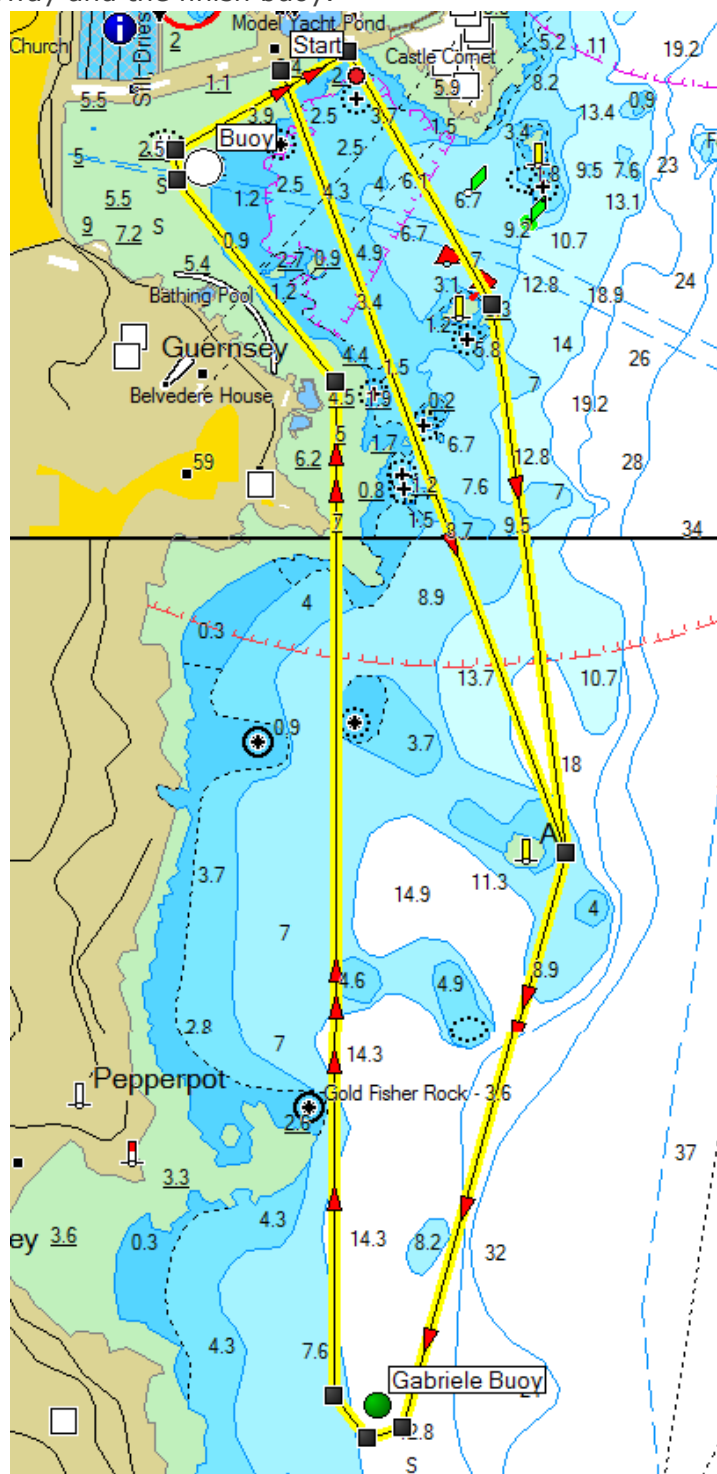


# Guernsey Rowing Club LBG

Alternative Courses

## Course G ~ 10,300 Metres

A two lap clockwise course. Start with sterns to the wall and row outside Anfré Beacon (A) then around Gabrielle turn buoy. Continue clockwise around the turn buoy in Havelet Bay and around the finish buoy. On the second lap pass outside Moulinet Beacon (M), outside Anfré Beacon (A) then around Gabrielle turn buoy. Continue clockwise around the turn buoy in Havelet Bay then on to the finish line between the life buoy holder above the slipway and the finish buoy.



© Guernsey Rowing Club LBG 2014  
Registered Number 43627

The Boathouse  
Mont Crevelt  
Bulwer Avenue  
St. Sampson's  
Guernsey, GY2 4LH

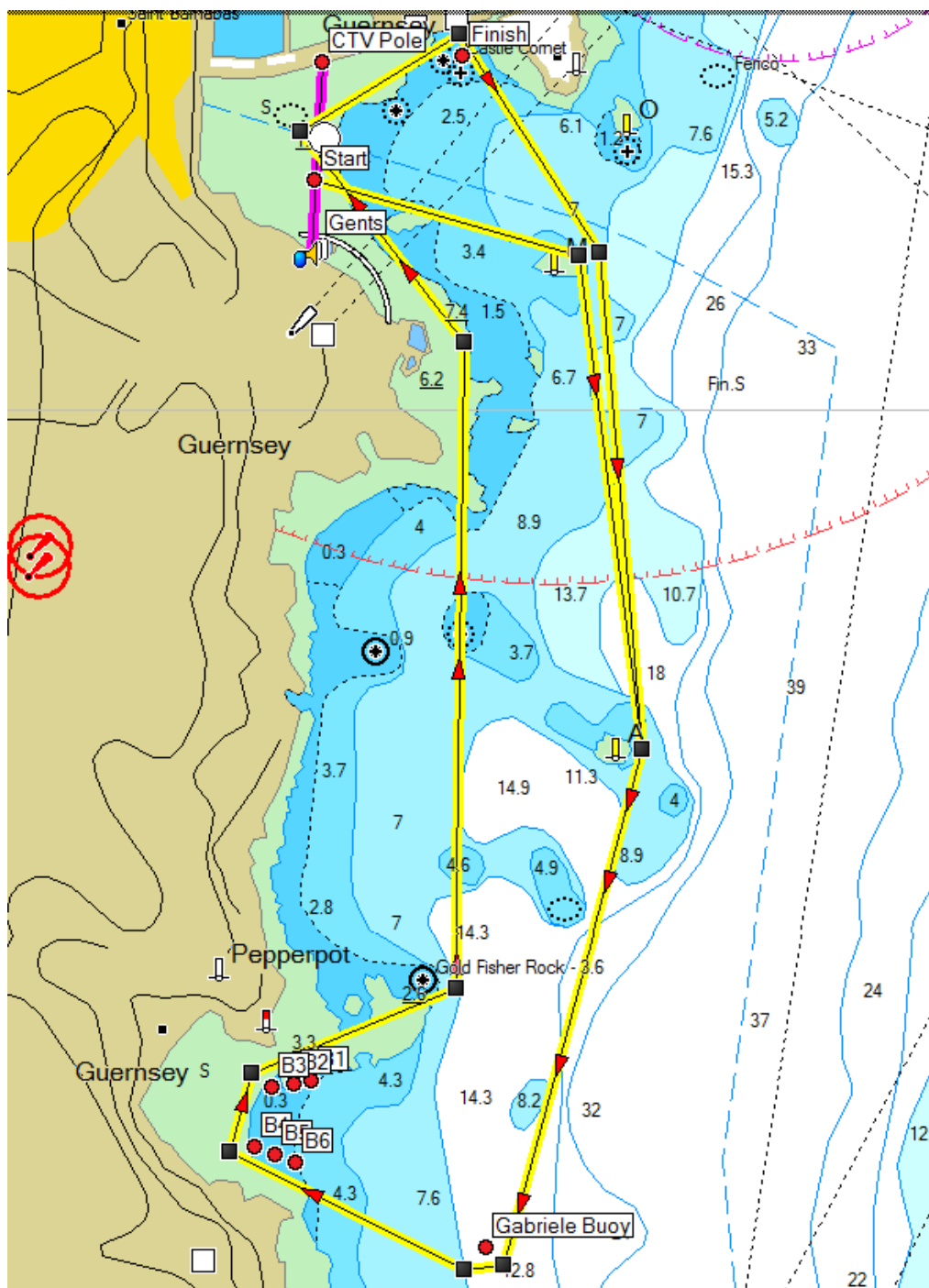


# Guernsey Rowing Club LBG

Alternative Courses

## Course H / "Around Jethou Alternative" ~ 11,500 metres

A two lap clockwise course. The start is between the CTV pole on the Havelet Bay seawall and the Gents bathing pools. Row clockwise around Moulinet beacon (M), Anfré Beacon (A), Gabrielle turn buoy and all six visitor mooring buoys in Fermain Bay. Continue to the Havelet Bay turn buoy taking care of Gold Fisher Reef outside Fermain Bay and around the finish buoy. On the second lap pass outside all beacons and turn buoys again then on to the finish line between the life buoy holder above the slipway and the finish buoy.



© Guernsey Rowing Club LBG 2014  
Registered Number 43627

The Boathouse  
Mont Crevelt  
Bulwer Avenue  
St. Sampson's  
Guernsey, GY2 4LH



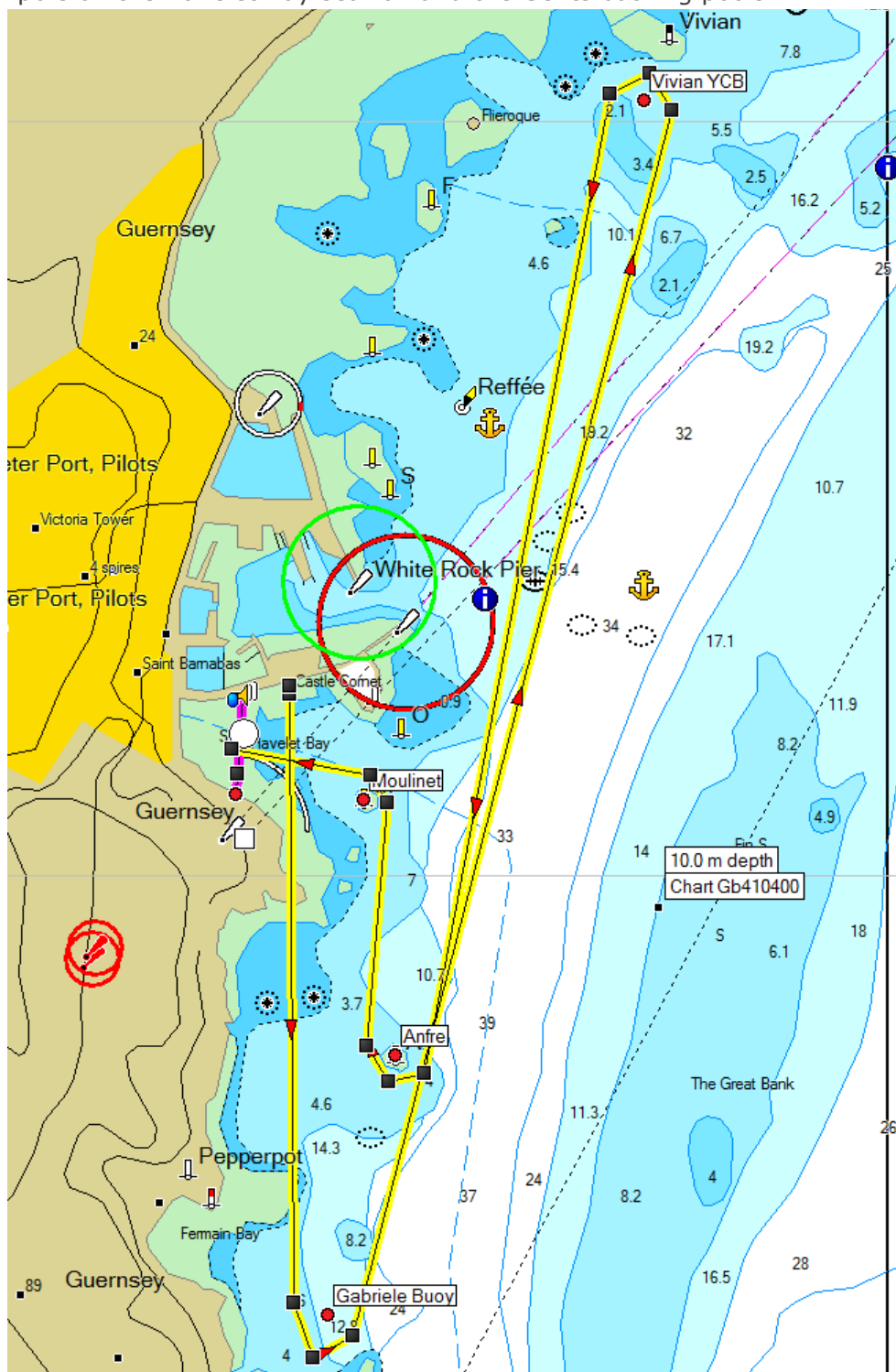


# Guernsey Rowing Club LBG

Alternative Courses

## Course I ~ 12,000 metres

Start with sterns to the wall. Row south to Gabrielle Yacht Club buoy, turn anti-clockwise then row north to Vivian Yacht Club buoy. Turn anti-clockwise then row south to Anfré beacon (A). Turn clockwise then row north to Moulinet beacon (M). Turn anti-clockwise then proceed west to the finish line, which is between the CTV pole on the Havelet Bay seawall and the Gents bathing pools.



© Guernsey Rowing Club LBG 2014  
Registered Number 43627

The Boathouse  
Mont Crevelt  
Bulwer Avenue  
St. Sampson's  
Guernsey, GY2 4LH

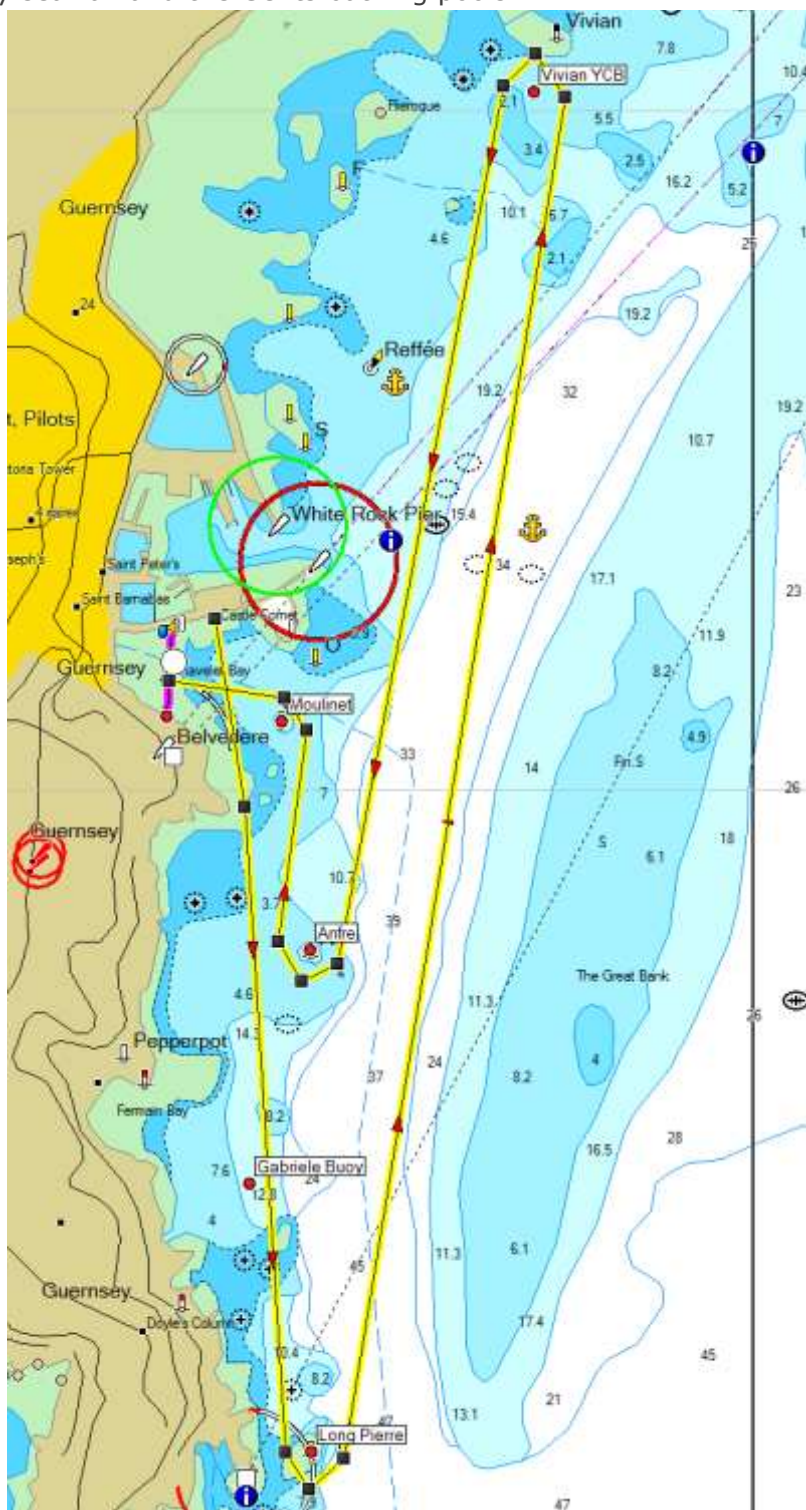


# Guernsey Rowing Club LBG

Alternative Courses

## Course J / "Clameur Alternative" ~ 14,800 metres

Start with sterns to the wall. Row south to Long Pierre, turn anti-clockwise then row north to Vivian Yacht Club buoy. Turn anti-clockwise then row south to Anfré beacon (A). Turn clockwise then row north to Moulinet beacon (M). Turn anti-clockwise then proceed west to the finish line, which is between the CTV pole on the Havelet Bay seawall and the Gents bathing pools.



© Guernsey Rowing Club LBG 2014  
Registered Number 43627

The Boathouse  
Mont Crevelt  
Bulwer Avenue  
St. Sampson's  
Guernsey, GY2 4LH