

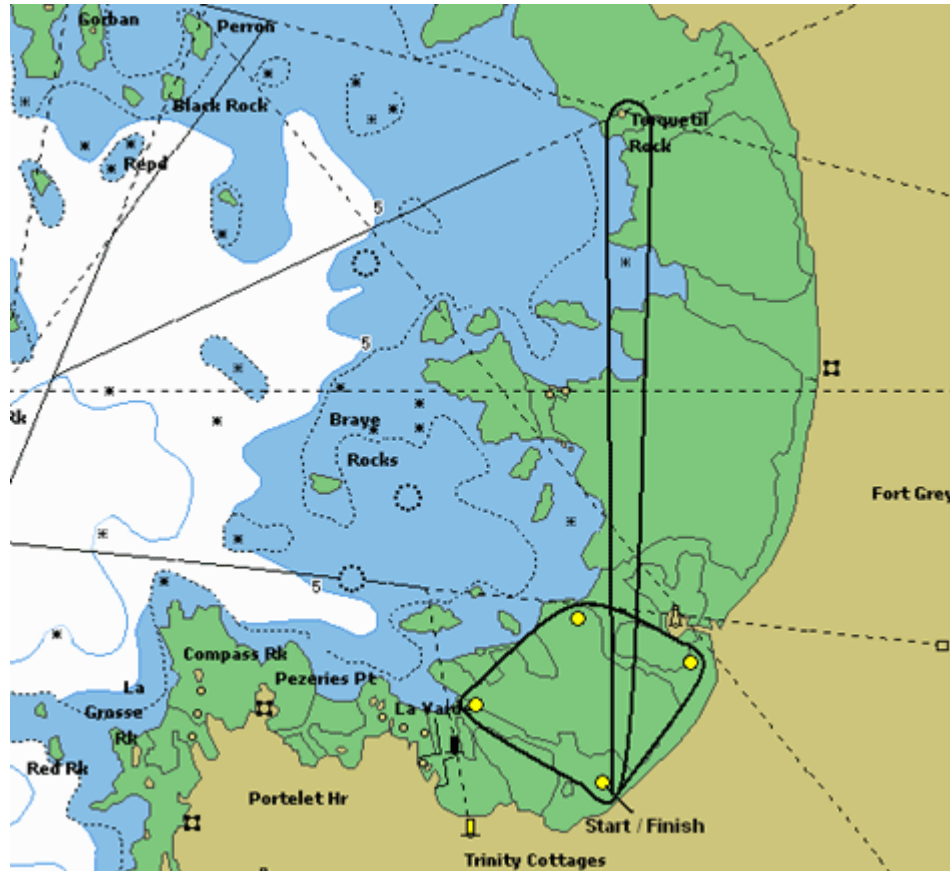


Guernsey Rowing Club

Rocquaine Regatta (Handicap race ~ 7,900 meters)
Grandes Courses à Nacier és Rocquaine

Course Summary

The start and finish line is between the south-eastern turn buoy and the timekeepers on the seawall. The first lap is past Fort Grey to the north of L'Eree bay and clockwise around Torquetil rock then back across the start line. Second and third laps are a clockwise circuit around the 4 turn buoys in Rocquaine bay.



CLASS RECORDS

Sliding Seat	Singles		Pairs		Fours		Open	
Mens	0:39:22	2004	0:34:59	31/07/10	0:33:09	31/07/10		
Ladies	0:44:16	31/07/10	0:52:32	2002	0:38:09	2007		
Mixed			0:40:20	31/07/10	0:34:48	2004		

Fixed Seat	Singles		Pairs		Fours		Open	
Mens	0:44:35	1995	0:41:17	1996	0:38:03	1993	0:36:00	1991
Ladies	0:48:34	1999	0:43:58	1996	0:42:17	1995		
Mixed			0:47:52	1998				